

## Lake Committee Minutes March 6, 2017

In Attendance: Tim Hamilton, Rich Richardson, San LaPoint, Bob Burasco, David Sinclair, Jess Hartter

Meeting called to order at 7:02 pm.

February minutes discussed and accepted.

### Open Forum

- Eddy Brown and Corey Besgrove from the Raintree Anglers Club to discuss placement of manufactured fish structure.
  - This was previously discussed and approved by the committee
  - 5 units made of 5 gallon plastic and flexible plastic tubing
  - GPS coordinates provided for consideration
  - Pictures of structure and coordinates provided to the office
  - Recommendation of additional weight to help prevent them from shifting
  - Criteria for placement are:
    - Out of common anchoring areas
    - Deep enough not to be an issue with swimmers or located where there aren't swimmers
  - Placement approved by the committee
  - San to go with Anglers club and help with placement
  - Pictures on following pages

### Old Business

- Ramp repair does not need to be performed. Semi –annual inspections to monitor
- Boat Ramp Parking
  - Existing lanes are too narrow
  - Propose using area from sidewalk to the first lane marking to make lanes larger. Should be able to add a foot to each lane by utilizing this space.
- Waterfowl Roundup
  - Need paperwork for Federal permits submitted ASAP for approval and scheduling
  - Tim volunteered to work with Rachelle
- New Boat Docks
  - Rich brought up that receptacles paid for by residents on docks being replaced need to be put on dock replacing that dock.
  - This was agreed upon unanimously
  - Tiger dock coming in slightly higher than bid due to material increases, approx. 3%
  - Discussion with Williams is they will hold prices. Keep them in mind for future purchases next year.
- Walking Path between ramp and courtesy dock
  - Becoming better established as time goes by

- A load of P gravel is all that is required
- Electrician Rule Change
  - Discussion to keep in place and use licensed electricians

#### New Business

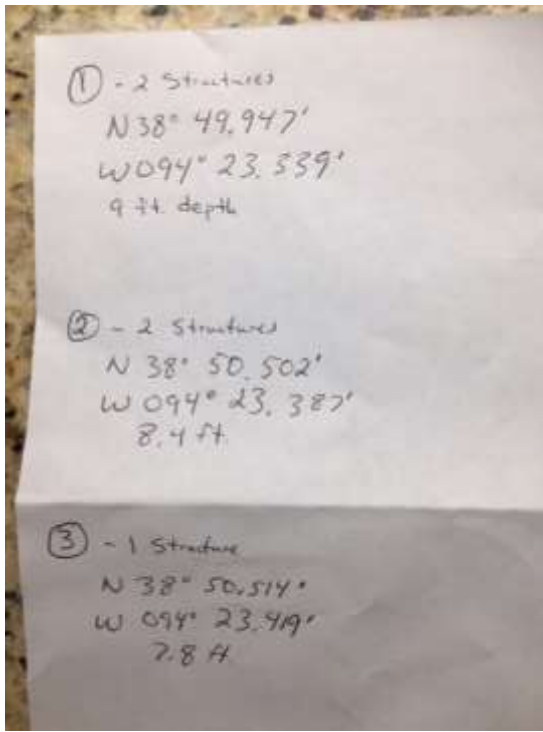
- Bob provided recommendations of acres/boat. Handout provided and on later pages

Meeting was adjourned at 8:02 pm due to thunder storm and tornado sirens in the distance.

#### Fish Structure:



GPS Coordinates:



Bob Burasco Handout:

### Carrying Capacity Standards

Carrying capacity is usually thought of as the limit for a system to withstand certain uses or impacts. Depending on the type of carrying capacity to be evaluated, different types of impacts would be measured. The physical carrying capacity establishes the number of boats that can physically fit into an area. The shoreland facilities are analyzed to determine the facility carrying capacity and the experience and interaction with other users establish the social carrying capacity.

A large range of recreational carrying capacity standards have been developed by different agencies across the United States.

Ohio utilizes a standard of 7.5 acres of lake surface for each operating motor boat,

Wisconsin 8 to 20 acres,

Vermont 10 to 20 acres depending on the boating activity.

New York State Office of Parks and Recreation (NYSOPR) recommends a standard of between 6 to 8 acres per boat for power and sail boating in its Statewide Comprehensive Recreational Plan of 1986.

More recent studies (Mallets Bay on Lake Champlain, 1989) indicate that professional recreational planners are increasing the range of acres per boat to between 15 to 40 acres. The more recent version of NYSOPR has the following space requirements for boats:

Sailboat 6-8 acres

Powerboats 6-8 acres

Waterskiing 15-20 acres

Fishing Anchor 0.3-0.5 acres

Rowboats 1 acre

Fishing Trolling 1 acre